



NASHVILLE AREA

Metropolitan Planning Organization

June 24, 2011

Mr. Robert Hayzlett
 Transportation Specialist
 Program Development & Scheduling Office
 Tennessee Department of Transportation
 505 Deaderick Street, Suite 600
 Nashville, Tennessee 37243

Dear Mr. Hayzlett:

Enclosed is Administrative Modification #2011-016 to the FY 2011-2015 Transportation Improvement Program. The following TDOT projects are being modified:

TIP #	Project	Modification
2006-411	ITS-Variou	Add funds
2006-411b	ITS-Variou	Add funds
2006-411c	ITS-Variou	Add funds

Additional funds for the project are being programmed from the remaining balance of IM funds as shown on TDOT's FY 2011-2014 STIP.

I have included original and revised copies of the affected TIP page for your reference. The Administrative Modification has been made according to the procedures identified in the MPO's federally-approved Public Participation Plan and results in a fiscally constrained TIP.

Thank you for your assistance in processing this request. If you have any questions or comments, please contact me or Félix Castrodad at 862-7204.

Best,

Michael Skipper
 Executive Director

CC w/enclosures: Ms. Teresa Estes, TDOT
 Ms. Angie Midgett, TDOT
 Mr. Tom Brashear, Wilson County, MPO TCC Chair
 Mayor Karl Dean, MPO Executive Board Chair

Enclosures

**Administrative Modification to The Fiscal Years 2011-2015
Transportation Improvement Program**

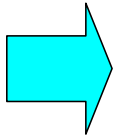
Administrative Modification #: 2011-016

TIP Number: 2006-411, 2006-411b & 2006-411c

FROM:

TIP# 2006-411, 2006-411b & 2006-411c						
Jurisdiction: TDOT						
Project: ITS - Various						
Termini: Various ITS Corridors						
Description: Operations & utilities/power/communication, maintenance, construction, etc.						
FY	Work	Funding	Total	Fed	State	Local
2011	UTILITIES	IM	200,000	180,000	20,000	
2011	OPERATIONS	IM	800,000	720,000	80,000	
2012	UTILITIES	IM	200,000	180,000	20,000	
2012	OPERATIONS	IM	800,000	720,000	80,000	
2013	UTILITIES	IM	200,000	180,000	20,000	
2013	OPERATIONS	IM	800,000	720,000	80,000	
2013	MAINTENANCE	IM	3,500,000	3,150,000	350,000	
2014	UTILITIES	IM	200,000	180,000	20,000	
2014	OPERATIONS	IM	800,000	720,000	80,000	
TOTAL			7,500,000	6,750,000	750,000	0

TO:



TIP# 2006-411, 2006-411b & 2006-411c						
Jurisdiction: TDOT						
Project: ITS - Various						
Termini: Various ITS Corridors						
Description: Operations & utilities/power/communication, maintenance, construction, etc.						
FY	Work	Funding	Total	Fed	State	Local
2011	UTILITIES	IM	200,000	180,000	20,000	
2011	OPERATIONS	IM	800,000	720,000	80,000	
2012	UTILITIES	IM	200,000	180,000	20,000	
2012	OPERATIONS	IM	1,233,334	1,110,001	123,333	
2013	UTILITIES	IM	200,000	180,000	20,000	
2013	OPERATIONS	IM	1,233,334	1,110,001	123,333	
2013	MAINTENANCE	IM	3,500,000	3,150,000	350,000	
2014	UTILITIES	IM	200,000	180,000	20,000	
2014	OPERATIONS	IM	1,125,000	1,012,500	112,500	
TOTAL			8,691,668	7,822,501	869,167	0

*This project is being adjusted to add \$390,001 (federal) for Operations in FYs 2012 and 2013 and \$292,500 (federal) in FY 2014.

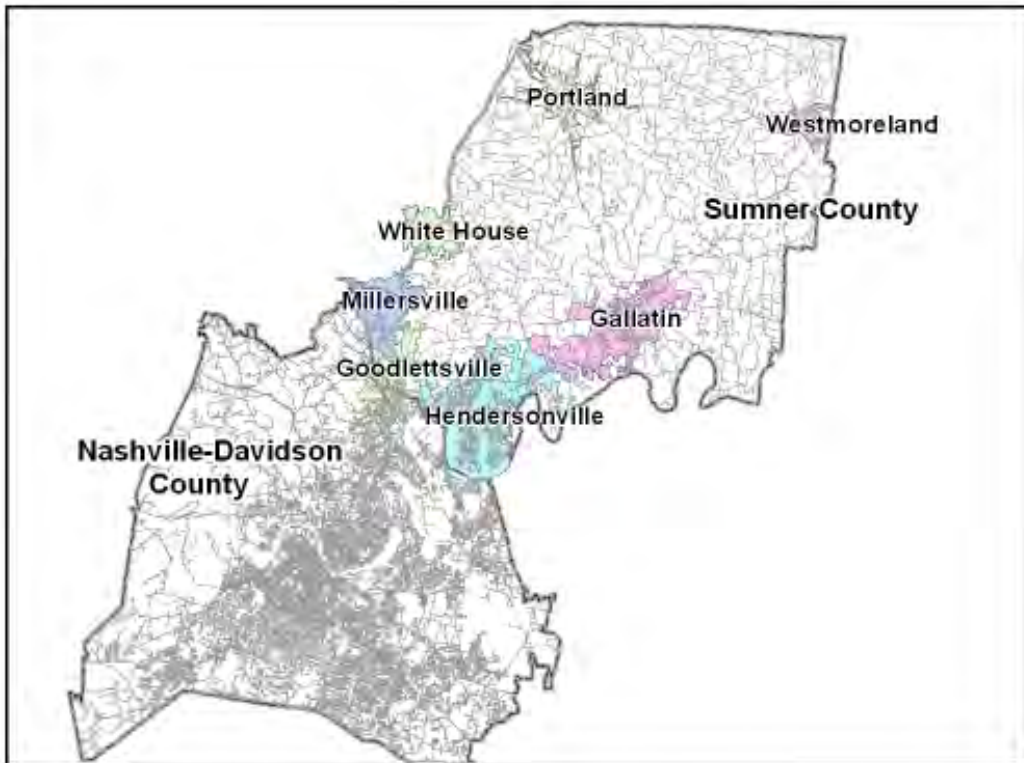


Nashville Area MPO Fiscal Years 2011-2015 Transportation Improvement Program

TIP #	<input type="text" value="2006-411"/>	TDOT PIN #	<input type="text"/>	Improvement Type	<input type="text" value="ITS"/>	Lead Agency	<input type="text" value="TDOT"/>
County	<input type="text" value="Davidson/Sumner"/>	Length	<input type="text"/> mi	RTP#	<input type="text" value="1087-281"/>	Conformity Status	<input type="text" value="Exempt"/>
Route/Project Name	<input type="text" value="ITS-Variou s"/>					Total Project Cost	<input type="text" value="\$7,500,000"/>
Termini or Intersection	<input type="text" value="Various ITS"/>						
Project Description	<input type="text" value="Operations & utilities/power/communication, maintenance, construction, etc."/>						

Fiscal Year	Type of Work	Funding Type	Total Funds	Fed Funds	State Funds	Local Funds
<input type="text" value="2011"/>	<input type="text" value="UTILITIES"/>	<input type="text" value="IM"/>	<input type="text" value="\$200,000"/>	<input type="text" value="\$180,000"/>	<input type="text" value="\$20,000"/>	<input type="text"/>
<input type="text" value="2011"/>	<input type="text" value="OPERATIONS"/>	<input type="text" value="IM"/>	<input type="text" value="\$800,000"/>	<input type="text" value="\$720,000"/>	<input type="text" value="\$80,000"/>	<input type="text"/>
<input type="text" value="2012"/>	<input type="text" value="UTILITIES"/>	<input type="text" value="IM"/>	<input type="text" value="\$200,000"/>	<input type="text" value="\$180,000"/>	<input type="text" value="\$20,000"/>	<input type="text"/>
<input type="text" value="2012"/>	<input type="text" value="OPERATIONS"/>	<input type="text" value="IM"/>	<input type="text" value="\$800,000"/>	<input type="text" value="\$720,000"/>	<input type="text" value="\$80,000"/>	<input type="text"/>

		Remarks		
Amendment 1 #	<input type="text"/>	Admin Modification 1#	<input type="text"/>	
Amended on	<input type="text"/>	Modified on	<input type="text"/>	
Amendment 2 #	<input type="text"/>	Admin Modification 2#	<input type="text"/>	
Amended on	<input type="text"/>	Modified on	<input type="text"/>	



This map is for illustrative purposes only. Drawings depict conceptual project corridors and areas, not approved alignments.

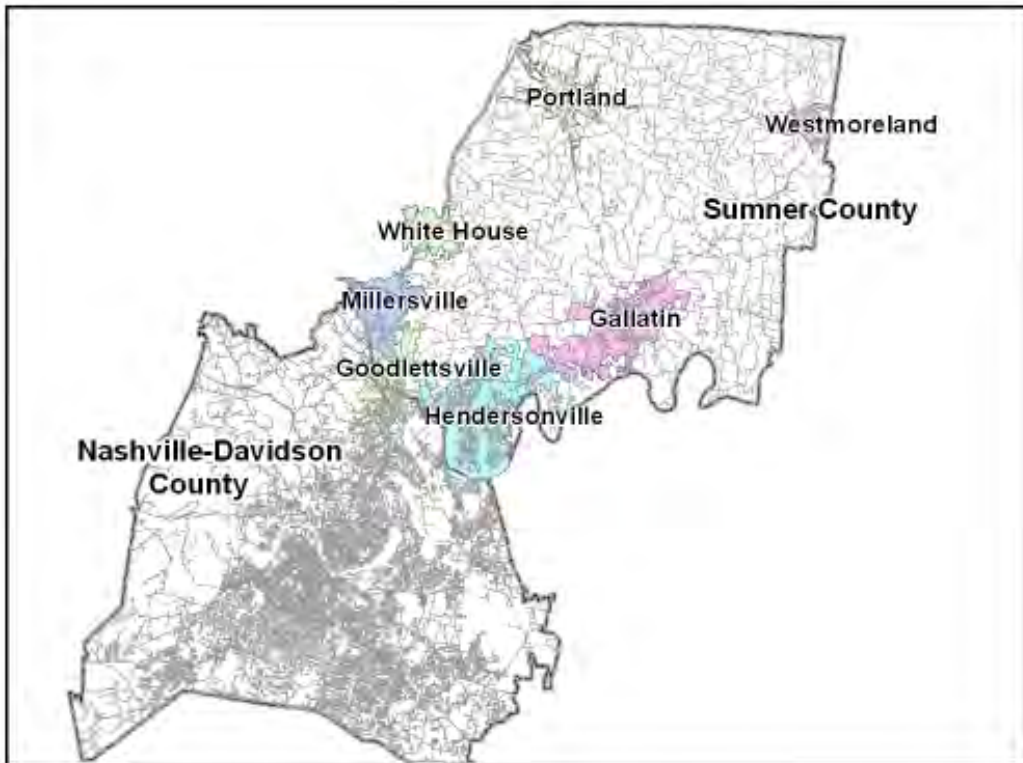


Nashville Area MPO Fiscal Years 2011-2015 Transportation Improvement Program

TIP #	<input type="text" value="2006-411b"/>	TDOT PIN #	<input type="text"/>	Improvement Type	<input type="text" value="ITS"/>	Lead Agency	<input type="text" value="TDOT"/>
County	<input type="text" value="Davidson/Sumner"/>	Length	<input type="text" value="0.0"/> mi	RTP#	<input type="text" value="1087-281"/>	Conformity Status	<input type="text" value="Exempt"/>
Route/Project Name	<input type="text" value="ITS-Variou s"/>					Total Project Cost	<input type="text" value="\$7,500,000"/>
Termini or Intersection	<input type="text" value="Various ITS"/>						
Project Description	<input type="text" value="Operations & utilities/power/communication, maintenance, construction, etc."/>						

Fiscal Year	Type of Work	Funding Type	Total Funds	Fed Funds	State Funds	Local Funds
<input type="text" value="2013"/>	<input type="text" value="UTILITIES"/>	<input type="text" value="IM"/>	<input type="text" value="\$200,000"/>	<input type="text" value="\$180,000"/>	<input type="text" value="\$20,000"/>	<input type="text"/>
<input type="text" value="2013"/>	<input type="text" value="OPERATIONS"/>	<input type="text" value="IM"/>	<input type="text" value="\$800,000"/>	<input type="text" value="\$720,000"/>	<input type="text" value="\$80,000"/>	<input type="text"/>
<input type="text" value="2013"/>	<input type="text" value="MAINTENANCE"/>	<input type="text" value="IM"/>	<input type="text" value="\$3,500,000"/>	<input type="text" value="\$3,150,000"/>	<input type="text" value="\$350,000"/>	<input type="text"/>
<input type="text" value="2014"/>	<input type="text" value="UTILITIES"/>	<input type="text" value="IM"/>	<input type="text" value="\$200,000"/>	<input type="text" value="\$180,000"/>	<input type="text" value="\$20,000"/>	<input type="text"/>

			Remarks	This is a continuation of project 2006-411a. Due to database design, project was divided in two.
Amendment 1 #	<input type="text"/>	Admin Modification 1#	<input type="text"/>	
Amended on	<input type="text"/>	Modified on	<input type="text"/>	
Amendment 2 #	<input type="text"/>	Admin Modification 2#	<input type="text"/>	
Amended on	<input type="text"/>	Modified on	<input type="text"/>	



This map is for illustrative purposes only. Drawings depict conceptual project corridors and areas, not approved alignments.

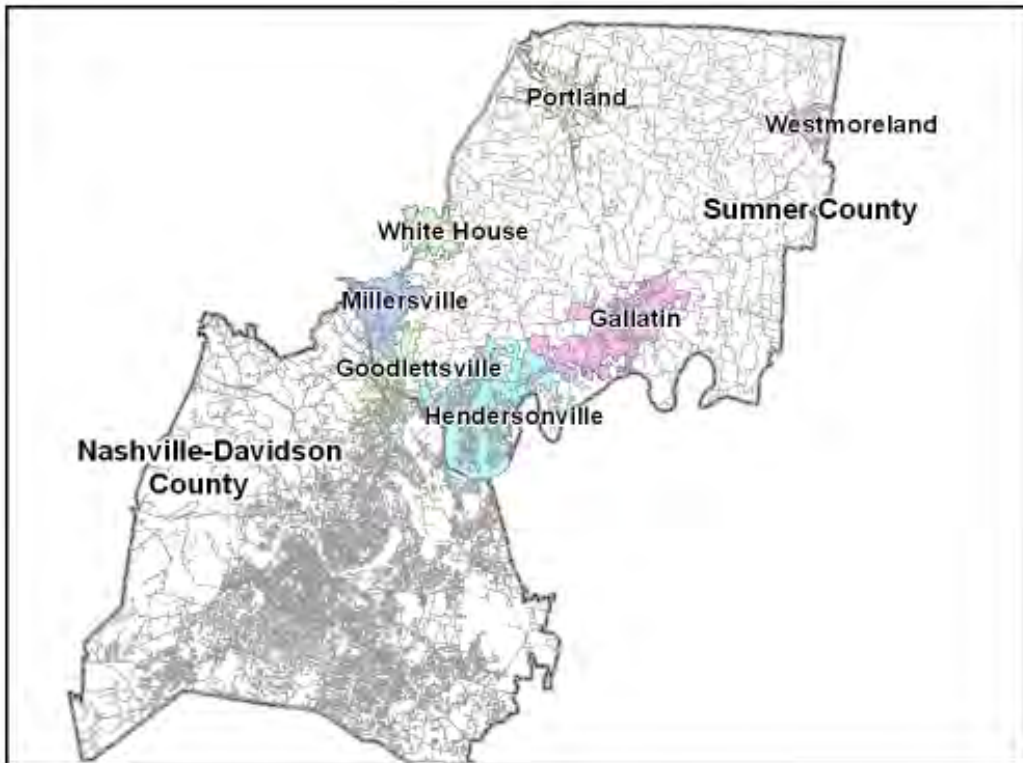


Nashville Area MPO Fiscal Years 2011-2015 Transportation Improvement Program

TIP # <input type="text" value="2006-411c"/>	TDOT PIN # <input type="text"/>	Improvement Type <input type="text" value="ITS"/>	Lead Agency <input type="text" value="TDOT"/>
County <input type="text" value="Davidson/Sumner"/>	Length <input type="text"/> mi	RTP# <input type="text" value="1087-281"/>	Conformity Status <input type="text" value="Exempt"/>
Route/Project Name <input type="text" value="ITS-VariouS"/>		Total Project Cost <input type="text" value="\$7,500,000"/>	
Termini or Intersection <input type="text" value="Various ITS"/>			
Project Description <input type="text" value="Operations & utilities/power/communication, maintenance, construction, etc."/>			

Fiscal Year	Type of Work	Funding Type	Total Funds	Fed Funds	State Funds	Local Funds
<input type="text" value="2014"/>	<input type="text" value="OPERATIONS"/>	<input type="text" value="IM"/>	<input type="text" value="\$800,000"/>	<input type="text" value="\$720,000"/>	<input type="text" value="\$80,000"/>	<input type="text"/>
<input type="text"/>	<input type="text"/>	<input type="text"/>	<input type="text"/>	<input type="text"/>	<input type="text"/>	<input type="text"/>
<input type="text"/>	<input type="text"/>	<input type="text"/>	<input type="text"/>	<input type="text"/>	<input type="text"/>	<input type="text"/>
<input type="text"/>	<input type="text"/>	<input type="text"/>	<input type="text"/>	<input type="text"/>	<input type="text"/>	<input type="text"/>

		Remarks	
Amendment 1 # <input type="text"/>	Admin Modification 1# <input type="text"/>		
Amended on <input type="text"/>	Modified on <input type="text"/>		
Amendment 2 # <input type="text"/>	Admin Modification 2# <input type="text"/>		
Amended on <input type="text"/>	Modified on <input type="text"/>		



This map is for illustrative purposes only. Drawings depict conceptual project corridors and areas, not approved alignments.

This page left blank intentionally



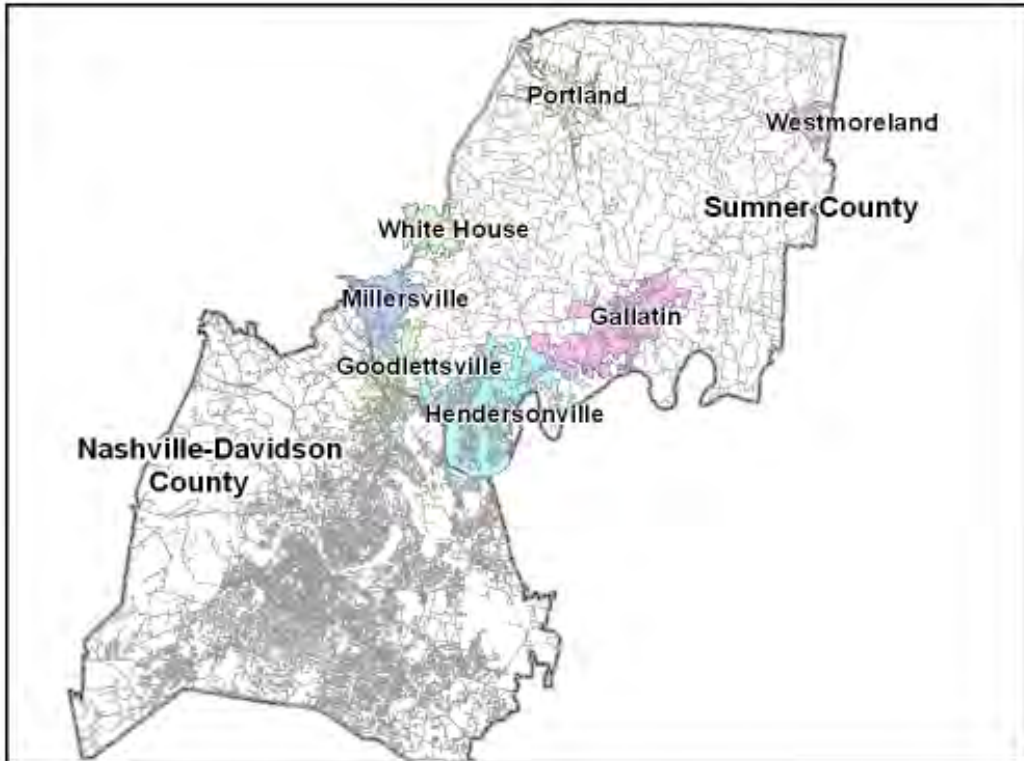
REVISED

Nashville Area MPO Fiscal Years 2011-2015 Transportation Improvement Program

TIP #	<input type="text" value="2006-411"/>	TDOT PIN #	<input type="text"/>	Improvement Type	<input type="text" value="ITS"/>	Lead Agency	<input type="text" value="TDOT"/>
County	<input type="text" value="Davidson/Sumner"/>	Length	<input type="text"/> mi	RTP#	<input type="text" value="1087-281"/>	Conformity Status	<input type="text" value="Exempt"/>
Route/Project Name	<input type="text" value="ITS-VariouS"/>					Total Project Cost	<input type="text" value="\$8,691,668"/>
Termini or Intersection	<input type="text" value="Various ITS"/>						
Project Description	<input type="text" value="Operations & utilities/power/communication, maintenance, construction, etc."/>						

Fiscal Year	Type of Work	Funding Type	Total Funds	Fed Funds	State Funds	Local Funds
<input type="text" value="2011"/>	<input type="text" value="UTILITIES"/>	<input type="text" value="IM"/>	<input type="text" value="\$200,000"/>	<input type="text" value="\$180,000"/>	<input type="text" value="\$20,000"/>	<input type="text"/>
<input type="text" value="2011"/>	<input type="text" value="OPERATIONS"/>	<input type="text" value="IM"/>	<input type="text" value="\$800,000"/>	<input type="text" value="\$720,000"/>	<input type="text" value="\$80,000"/>	<input type="text"/>
<input type="text" value="2012"/>	<input type="text" value="UTILITIES"/>	<input type="text" value="IM"/>	<input type="text" value="\$200,000"/>	<input type="text" value="\$180,000"/>	<input type="text" value="\$20,000"/>	<input type="text"/>
<input type="text" value="2012"/>	<input type="text" value="OPERATIONS"/>	<input type="text" value="IM"/>	<input type="text" value="\$1,233,334"/>	<input type="text" value="\$1,110,001"/>	<input type="text" value="\$123,333"/>	<input type="text"/>

		Remarks	
Amendment 1 #	<input type="text"/>	Admin Modification 1#	<input type="text" value="2011-016"/>
Amended on	<input type="text"/>	Modified on	<input type="text" value="6/24/2011"/>
Amendment 2 #	<input type="text"/>	Admin Modification 2#	<input type="text"/>
Amended on	<input type="text"/>	Modified on	<input type="text"/>



This map is for illustrative purposes only. Drawings depict conceptual project corridors and areas, not approved alignments.



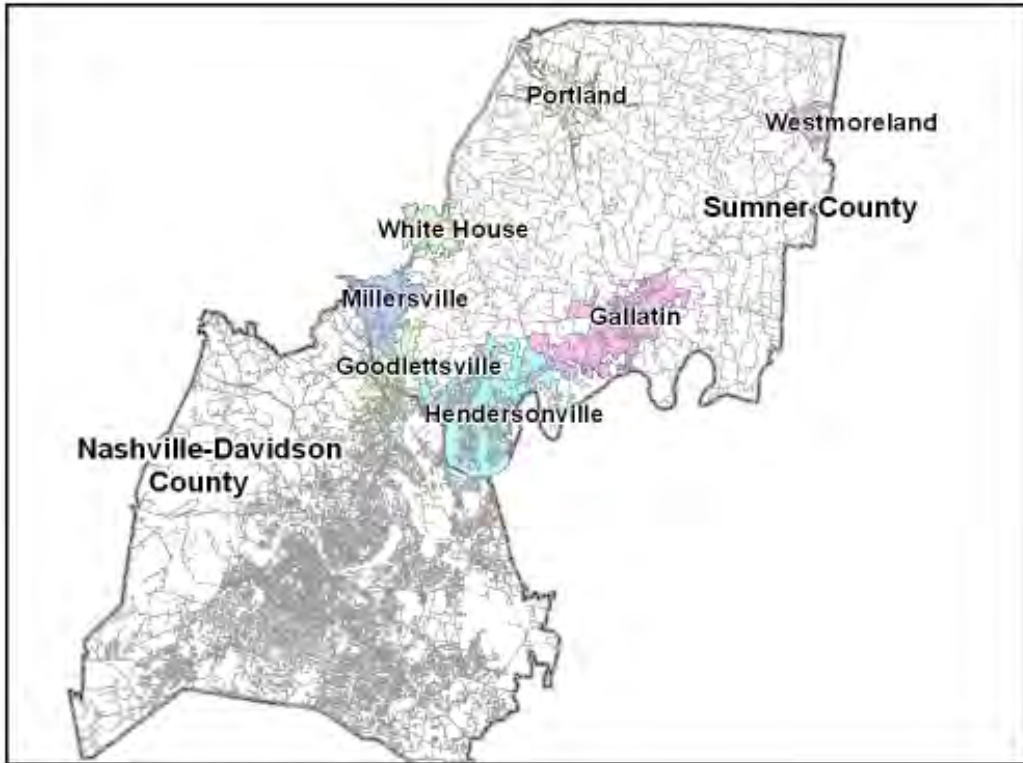
REVISED

Nashville Area MPO Fiscal Years 2011-2015 Transportation Improvement Program

TIP #	<input type="text" value="2006-411b"/>	TDOT PIN #	<input type="text"/>	Improvement Type	<input type="text" value="ITS"/>	Lead Agency	<input type="text" value="TDOT"/>
County	<input type="text" value="Davidson/Sumner"/>	Length	<input type="text" value="0.0"/> mi	RTP#	<input type="text" value="1087-281"/>	Conformity Status	<input type="text" value="Exempt"/>
Route/Project Name	<input type="text" value="ITS-Variou s"/>					Total Project Cost	<input type="text" value="\$8,691,668"/>
Termini or Intersection	<input type="text" value="Various ITS"/>						
Project Description	<input type="text" value="Operations & utilities/power/communication, maintenance, construction, etc."/>						

Fiscal Year	Type of Work	Funding Type	Total Funds	Fed Funds	State Funds	Local Funds
<input type="text" value="2013"/>	<input type="text" value="UTILITIES"/>	<input type="text" value="IM"/>	<input type="text" value="\$200,000"/>	<input type="text" value="\$180,000"/>	<input type="text" value="\$20,000"/>	<input type="text"/>
<input type="text" value="2013"/>	<input type="text" value="OPERATIONS"/>	<input type="text" value="IM"/>	<input type="text" value="\$1,233,334"/>	<input type="text" value="\$1,110,001"/>	<input type="text" value="\$123,333"/>	<input type="text"/>
<input type="text" value="2013"/>	<input type="text" value="MAINTENANCE"/>	<input type="text" value="IM"/>	<input type="text" value="\$3,500,000"/>	<input type="text" value="\$3,150,000"/>	<input type="text" value="\$350,000"/>	<input type="text"/>
<input type="text" value="2014"/>	<input type="text" value="UTILITIES"/>	<input type="text" value="IM"/>	<input type="text" value="\$200,000"/>	<input type="text" value="\$180,000"/>	<input type="text" value="\$20,000"/>	<input type="text"/>

		Remarks	This is a continuation of project 2006-411. Due to database design, project was divided in three.	
Amendment 1 #	<input type="text"/>	Admin Modification 1#		<input type="text" value="2011-016"/>
Amended on	<input type="text"/>	Modified on		<input type="text" value="6/24/2011"/>
Amendment 2 #	<input type="text"/>	Admin Modification 2#		<input type="text"/>
Amended on	<input type="text"/>	Modified on		<input type="text"/>



This map is for illustrative purposes only. Drawings depict conceptual project corridors and areas, not approved alignments.



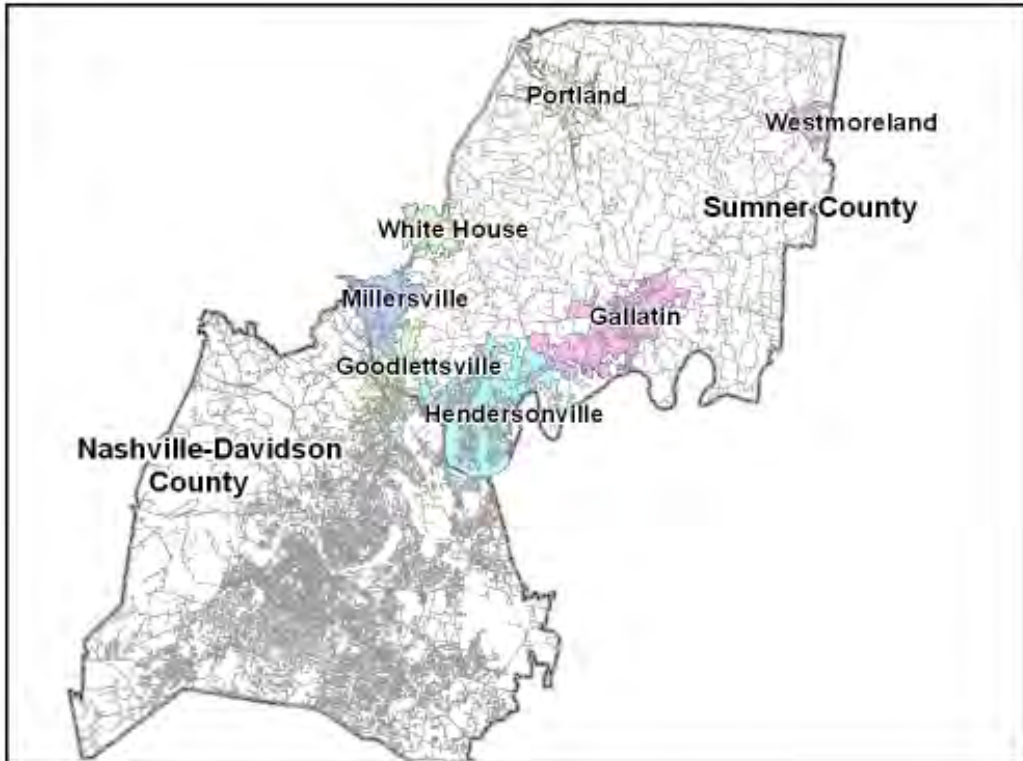
REVISED

Nashville Area MPO Fiscal Years 2011-2015 Transportation Improvement Program

TIP #	<input type="text" value="2006-411c"/>	TDOT PIN #	<input type="text"/>	Improvement Type	<input type="text" value="ITS"/>	Lead Agency	<input type="text" value="TDOT"/>
County	<input type="text" value="Davidson/Sumner"/>	Length	<input type="text"/> mi	RTP#	<input type="text" value="1087-281"/>	Conformity Status	<input type="text" value="Exempt"/>
Route/Project Name	<input type="text" value="ITS-Variou s"/>					Total Project Cost	<input type="text" value="\$8,691,668"/>
Termini or Intersection	<input type="text" value="Various ITS"/>						
Project Description	<input type="text" value="Operations & utilities/power/communication, maintenance, construction, etc."/>						

Fiscal Year	Type of Work	Funding Type	Total Funds	Fed Funds	State Funds	Local Funds
<input type="text" value="2014"/>	<input type="text" value="OPERATIONS"/>	<input type="text" value="IM"/>	<input type="text" value="\$1,125,000"/>	<input type="text" value="\$1,012,500"/>	<input type="text" value="\$112,500"/>	<input type="text"/>
<input type="text"/>	<input type="text"/>	<input type="text"/>	<input type="text"/>	<input type="text"/>	<input type="text"/>	<input type="text"/>
<input type="text"/>	<input type="text"/>	<input type="text"/>	<input type="text"/>	<input type="text"/>	<input type="text"/>	<input type="text"/>
<input type="text"/>	<input type="text"/>	<input type="text"/>	<input type="text"/>	<input type="text"/>	<input type="text"/>	<input type="text"/>

		Remarks	This is a continuation of project 2006-411. Due to database design, project was divided in three.	
Amendment 1 #	<input type="text"/>	Admin Modification 1#		<input type="text" value="2011-016"/>
Amended on	<input type="text"/>	Modified on		<input type="text" value="6/24/2011"/>
Amendment 2 #	<input type="text"/>	Admin Modification 2#		<input type="text"/>
Amended on	<input type="text"/>	Modified on		<input type="text"/>



This map is for illustrative purposes only. Drawings depict conceptual project corridors and areas, not approved alignments.

This page left blank intentionally

**Nashville Area MPO
Transportation Improvement Program
FYs 2011 through 2015**

Funding Tables, Before June 24, 2011 Adjustment

Table 1. FYs 2011-2015 TDOT Program Funds

Grant Program	FY 2011	FY 2012	FY 2013	FY 2014	FY 2015	TOTAL
Total Amount Programmed*	\$ 263,351,513	\$ 106,826,715	\$ 87,583,104	\$ 22,508,979	\$ 431,250	\$ 480,701,561
BRR-L (Bridge Replacement & Rehabilitation - Local)	\$ 408,000	\$ 408,000	\$ 408,000	\$ 408,000	\$ -	\$ 1,632,000
BRR-S (Bridge Replacement & Rehabilitation - State)	\$ 3,240,000	\$ 3,240,000	\$ 3,240,000	\$ 3,240,000	\$ -	\$ 12,960,000
CMAQ (Congestion Mitigation Air Quality)	\$ 11,293,043	\$ 3,606,825	\$ 4,013,300	\$ 1,615,000	\$ -	\$ 20,528,168
DEMO (Section 115 Demonstration Program)	\$ 354,172	\$ -	\$ -	\$ -	\$ -	\$ 354,172
ENH (Enhancement Grants)	\$ 5,247,113	\$ 2,000,000	\$ 3,000,526	\$ 2,000,000	\$ -	\$ 12,247,639
HPP (High Priority Projects)	\$ 25,068,062	\$ 1,280,430	\$ 5,030,166	\$ 844,800	\$ -	\$ 32,223,458
HSIP (Highway Safety Improvement Program)	\$ 7,470,000	\$ 1,800,000	\$ 1,800,000	\$ 1,800,000	\$ -	\$ 12,870,000
H-STP (STP Set Aside for Hazard Elimination)	\$ 100,000	\$ -	\$ -	\$ -	\$ -	\$ 100,000
IM (Interstate Maintenance)	\$ 96,120,000	\$ 31,158,000	\$ 47,002,500	\$ 1,305,000	\$ -	\$ 175,585,500
ITS (Intelligent Transportation Systems)	\$ 1,891,073	\$ -	\$ -	\$ -	\$ -	\$ 1,891,073
NHS (National Highway System)	\$ 1,760,000	\$ 800,000	\$ 4,200,000	\$ 2,024,000	\$ -	\$ 8,784,000
NSBP (National Scenic Byways Program)	\$ 276,644	\$ -	\$ -	\$ -	\$ -	\$ 276,644
PLHD (Public Lands Highways)	\$ 4,023,107	\$ -	\$ -	\$ -	\$ -	\$ 4,023,107
SRTS (Safe Routes to School)	\$ 850,000	\$ 850,000	\$ 850,000	\$ 850,000	\$ -	\$ 3,400,000
STP (State Surface Transportation Program)	\$ 37,026,542	\$ 26,913,168	\$ 3,200,480	\$ 3,428,480	\$ -	\$ 70,568,670
STP-S (STP Set Aside for Safety Improvements)	\$ -	\$ -	\$ 266,400	\$ -	\$ -	\$ 266,400
State Funds (includes matching funds)	\$ 68,223,757	\$ 34,770,292	\$ 14,571,732	\$ 4,993,699	\$ 431,250	\$ 122,990,730

*Funds are programmed only if corresponding revenue is anticipated by TDOT.

Table 2. FYs 2011-2015 MPO Funds: FHWA Grant Revenues

Grant Program	Opening Balance*	FY 2011 Allocation	FY 2012 Allocation	FY 2013 Allocation	FY 2014 Allocation	FY 2015 Allocation	Total Revenue
Total Revenue	\$ 77,766,914	\$ 17,448,154	\$ 17,801,939	\$ 18,335,997	\$ 19,987,190	\$ 20,586,805	\$ 171,926,999
STP Nash-Davidson UZA	\$ 63,059,849	\$ 14,972,607	\$ 15,421,785	\$ 15,884,439	\$ 16,360,972	\$ 16,851,801	\$ 142,551,453
STP Murfreesboro UZA	\$ 10,302,617	\$ 2,310,829	\$ 2,380,154	\$ 2,451,558	\$ 2,525,105	\$ 2,600,858	\$ 22,571,122
STP Lebanon**	\$ 1,389,339	\$ 164,718	\$ -	\$ -	\$ 347,335	\$ 357,755	\$ 2,259,147
STP Spring Hill**	\$ 1,313,746	\$ -	\$ -	\$ -	\$ 328,437	\$ 338,290	\$ 1,980,472
STP Fairview**	\$ 486,114	\$ -	\$ -	\$ -	\$ 121,529	\$ 125,174	\$ 732,817
STP Portland**	\$ 612,637	\$ -	\$ -	\$ -	\$ 153,159	\$ 157,754	\$ 923,550
STP White House**	\$ 602,612	\$ -	\$ -	\$ -	\$ 150,653	\$ 155,173	\$ 908,438

*Opening balance includes unobligated funds from prior years. **Local Urban Area STP for communities 5,000 to 50,000 in population is allocated by TDOT in four-year cycles.

Table 3. FYs 2011-2015 MPO Funds: FHWA Grant Expenditures

Grant Program	FY 2011	FY 2012	FY 2013	FY 2014	FY 2015	TOTAL
Total Amount Programmed	\$ 83,897,163	\$ 8,463,505	\$ 6,420,000	\$ 3,876,000	\$ 1,500,000	\$ 104,156,668
STP Nash-Davidson UZA	\$ 73,348,055	\$ 4,678,584	\$ 660,000	\$ 500,000	\$ 1,500,000	\$ 80,687,439
STP Murfreesboro UZA	\$ 7,988,320	\$ 2,868,000	\$ 5,760,000	\$ 2,720,000	\$ -	\$ 19,336,320
STP Lebanon	\$ 307,700	\$ 916,921	\$ -	\$ 656,000	\$ -	\$ 1,880,621
STP Spring Hill	\$ 1,135,966	\$ -	\$ -	\$ -	\$ -	\$ 1,135,966
STP Fairview	\$ -	\$ -	\$ -	\$ -	\$ -	\$ -
STP Portland	\$ 545,110	\$ -	\$ -	\$ -	\$ -	\$ 545,110
STP White House	\$ 571,212	\$ -	\$ -	\$ -	\$ -	\$ 571,212

Table 4. FYs 2011-2015 MPO Funds: FHWA Unprogrammed Revenues

Grant Program	FY 2011	FY 2012	FY 2013	FY 2014	FY 2015
Remaining Balance*	\$ 11,317,905	\$ 20,656,339	\$ 32,572,336	\$ 48,956,151	\$ 68,042,955
STP Nash-Davidson UZA	\$ 4,683,601	\$ 15,426,802	\$ 30,651,241	\$ 46,613,013	\$ 61,964,814
STP Murfreesboro UZA	\$ 4,625,126	\$ 4,137,280	\$ 828,838	\$ 633,944	\$ 3,234,802
STP Lebanon	\$ 1,246,357	\$ 329,436	\$ 329,436	\$ 20,771	\$ 378,526
STP Spring Hill	\$ 177,780	\$ 177,780	\$ 177,780	\$ 506,217	\$ 844,506
STP Fairview	\$ 486,114	\$ 486,114	\$ 486,114	\$ 607,643	\$ 732,817
STP Portland	\$ 67,527	\$ 67,527	\$ 67,527	\$ 493,310	\$ 651,064
STP White House	\$ 31,400	\$ 31,400	\$ 31,400	\$ 182,053	\$ 337,226

* Annual cumulative balance.

Table 5. FYs 2011-2015 MPO Funds: FHWA Construction Reserves & Balances

Grant Program	FY 2011 to FY 2015
STP Nash-Davidson UZA Unprogrammed Funds	\$ 61,964,814
STP Nash-Davidson UZA Construction Reserve	\$ 61,386,122
STP Nash-Davidson UZA Remaining Balance	\$ 377,092
STP Murfreesboro UZA Unprogrammed Funds	\$ 3,234,802
STP Murfreesboro UZA Construction Reserve	\$ 2,000,000
STP Murfreesboro UZA Remaining Balance	\$ 1,234,802

Table 6. FYs 2011-2015 MPO Funds: FTA Grant Revenues

Grant Program	Opening Balance*	FY 2011 Allocation	FY 2012 Allocation	FY 2013 Allocation	FY 2014 Allocation	FY 2015 Allocation	Total Revenue
Total Revenue	\$ 4,987,386	\$ 16,886,836	\$ 14,868,994	\$ 18,888,335	\$ 19,457,185	\$ 20,040,901	\$ 95,129,637
5307 Nash-Davidson UZA	\$ -	\$ 11,683,802	\$ 12,034,316	\$ 16,000,000	\$ 16,480,000	\$ 16,974,400	\$ 73,172,518
5307 Murfreesboro UZA	\$ 4,000,000	\$ 2,006,160	\$ 2,066,345	\$ 2,128,335	\$ 2,192,185	\$ 2,257,951	\$ 14,650,976
5316 Nash-Davidson UZA	\$ 539,887	\$ 440,113	\$ 455,000	\$ 470,000	\$ 485,000	\$ 499,550	\$ 2,889,550
5317 Nash-Davidson UZA	\$ 378,086	\$ 272,461	\$ 313,333	\$ 290,000	\$ 300,000	\$ 309,000	\$ 1,862,880
5309 Capital Investments	\$ 69,413	\$ 1,304,300	\$ -	\$ -	\$ -	\$ -	\$ 1,373,713
5339 Alternative Analysis	\$ -	\$ 1,180,000	\$ -	\$ -	\$ -	\$ -	\$ 1,180,000

*Opening balance includes unobligated funds from prior years.

Table 7. FYs 2011-2015 MPO Funds: FTA Grant Expenditures

Grant Program	FY 2011	FY 2012	FY 2013	FY 2014	FY 2015	TOTAL
Total Amount Programmed	\$ 20,826,120	\$ 13,683,220	\$ 15,724,643	\$ 16,873,850	\$ 3,450,000	\$ 70,557,833
5307 Nash-Davidson UZA	\$ 11,676,110	\$ 11,393,162	\$ 13,397,265	\$ 14,474,451	\$ 3,450,000	\$ 54,390,988
5307 Murfreesboro UZA	\$ 4,965,750	\$ 1,521,725	\$ 1,567,378	\$ 1,614,399	\$ -	\$ 9,669,252
5316 Nash-Davidson UZA	\$ 980,000	\$ 455,000	\$ 470,000	\$ 485,000	\$ -	\$ 2,390,000
5317 Nash-Davidson UZA	\$ 650,547	\$ 313,333	\$ 290,000	\$ 300,000	\$ -	\$ 1,553,880
5309 Capital Investments	\$ 1,373,713	\$ -	\$ -	\$ -	\$ -	\$ 1,373,713
5339 Alternative Analysis	\$ 1,180,000	\$ -	\$ -	\$ -	\$ -	\$ 1,180,000

Table 8. FYs 2011-2015 MPO Funds: FTA Unprogrammed Revenues

Grant Program	FY 2011	FY 2012	FY 2013	FY 2014	FY 2015
Remaining Balance*	\$ 1,048,102	\$ 2,233,875	\$ 5,397,567	\$ 7,980,902	\$ 24,571,803
5307 Nash-Davidson UZA	\$ 7,692	\$ 648,846	\$ 3,251,581	\$ 5,257,130	\$ 18,781,530
5307 Murfreesboro UZA	\$ 1,040,410	\$ 1,585,030	\$ 2,145,987	\$ 2,723,773	\$ 4,981,723
5316 Nash-Davidson UZA	\$ -	\$ -	\$ -	\$ -	\$ 499,550
5317 Nash-Davidson UZA	\$ -	\$ -	\$ -	\$ -	\$ 309,000
5309 Capital Investments	\$ -	\$ -	\$ -	\$ -	\$ -
5339 Alternative Analysis	\$ -	\$ -	\$ -	\$ -	\$ -

* Annual cumulative balance.

This page left blank intentionally

**Nashville Area MPO
Transportation Improvement Program
FYs 2011 through 2015**

Funding Tables, After June 24, 2011 Adjustment

Table 1. FYs 2011-2015 TDOT Program Funds

Grant Program	FY 2011	FY 2012	FY 2013	FY 2014	FY 2015	TOTAL
Total Amount Programmed*	\$ 263,351,513	\$ 107,260,049	\$ 88,016,438	\$ 22,833,979	\$ 431,250	\$ 481,893,229
BRR-L (Bridge Replacement & Rehabilitation - Local)	\$ 408,000	\$ 408,000	\$ 408,000	\$ 408,000	\$ -	\$ 1,632,000
BRR-S (Bridge Replacement & Rehabilitation - State)	\$ 3,240,000	\$ 3,240,000	\$ 3,240,000	\$ 3,240,000	\$ -	\$ 12,960,000
CMAQ (Congestion Mitigation Air Quality)	\$ 11,293,043	\$ 3,606,825	\$ 4,013,300	\$ 1,615,000	\$ -	\$ 20,528,168
DEMO (Section 115 Demonstration Program)	\$ 354,172	\$ -	\$ -	\$ -	\$ -	\$ 354,172
ENH (Enhancement Grants)	\$ 5,247,113	\$ 2,000,000	\$ 3,000,526	\$ 2,000,000	\$ -	\$ 12,247,639
HPP (High Priority Projects)	\$ 25,068,062	\$ 1,280,430	\$ 5,030,166	\$ 844,800	\$ -	\$ 32,223,458
HSIP (Highway Safety Improvement Program)	\$ 7,470,000	\$ 1,800,000	\$ 1,800,000	\$ 1,800,000	\$ -	\$ 12,870,000
H-STP (STP Set Aside for Hazard Elimination)	\$ 100,000	\$ -	\$ -	\$ -	\$ -	\$ 100,000
IM (Interstate Maintenance)	\$ 96,120,000	\$ 31,548,001	\$ 47,392,501	\$ 1,597,500	\$ -	\$ 176,658,002
ITS (Intelligent Transportation Systems)	\$ 1,891,073	\$ -	\$ -	\$ -	\$ -	\$ 1,891,073
NHS (National Highway System)	\$ 1,760,000	\$ 800,000	\$ 4,200,000	\$ 2,024,000	\$ -	\$ 8,784,000
NSBP (National Scenic Byways Program)	\$ 276,644	\$ -	\$ -	\$ -	\$ -	\$ 276,644
PLHD (Public Lands Highways)	\$ 4,023,107	\$ -	\$ -	\$ -	\$ -	\$ 4,023,107
SRTS (Safe Routes to School)	\$ 850,000	\$ 850,000	\$ 850,000	\$ 850,000	\$ -	\$ 3,400,000
STP (State Surface Transportation Program)	\$ 37,026,542	\$ 26,913,168	\$ 3,200,480	\$ 3,428,480	\$ -	\$ 70,568,670
STP-S (STP Set Aside for Safety Improvements)	\$ -	\$ -	\$ 266,400	\$ -	\$ -	\$ 266,400
State Funds (includes matching funds)	\$ 68,223,757	\$ 34,813,625	\$ 14,615,065	\$ 5,026,199	\$ 431,250	\$ 123,109,896

*Funds are programmed only if corresponding revenue is anticipated by TDOT.

Table 2. FYs 2011-2015 MPO Funds: FHWA Grant Revenues

Grant Program	Opening Balance*	FY 2011 Allocation	FY 2012 Allocation	FY 2013 Allocation	FY 2014 Allocation	FY 2015 Allocation	Total Revenue
Total Revenue	\$ 77,766,914	\$ 17,448,154	\$ 17,801,939	\$ 18,335,997	\$ 19,987,190	\$ 20,586,805	\$ 171,926,999
STP Nash-Davidson UZA	\$ 63,059,849	\$ 14,972,607	\$ 15,421,785	\$ 15,884,439	\$ 16,360,972	\$ 16,851,801	\$ 142,551,453
STP Murfreesboro UZA	\$ 10,302,617	\$ 2,310,829	\$ 2,380,154	\$ 2,451,558	\$ 2,525,105	\$ 2,600,858	\$ 22,571,122
STP Lebanon**	\$ 1,389,339	\$ 164,718	\$ -	\$ -	\$ 347,335	\$ 357,755	\$ 2,259,147
STP Spring Hill**	\$ 1,313,746	\$ -	\$ -	\$ -	\$ 328,437	\$ 338,290	\$ 1,980,472
STP Fairview**	\$ 486,114	\$ -	\$ -	\$ -	\$ 121,529	\$ 125,174	\$ 732,817
STP Portland**	\$ 612,637	\$ -	\$ -	\$ -	\$ 153,159	\$ 157,754	\$ 923,550
STP White House**	\$ 602,612	\$ -	\$ -	\$ -	\$ 150,653	\$ 155,173	\$ 908,438

*Opening balance includes unobligated funds from prior years. **Local Urban Area STP for communities 5,000 to 50,000 in population is allocated by TDOT in four-year cycles.

Table 3. FYs 2011-2015 MPO Funds: FHWA Grant Expenditures

Grant Program	FY 2011	FY 2012	FY 2013	FY 2014	FY 2015	TOTAL
Total Amount Programmed	\$ 83,897,163	\$ 8,463,505	\$ 6,420,000	\$ 3,876,000	\$ 1,500,000	\$ 104,156,668
STP Nash-Davidson UZA	\$ 73,348,055	\$ 4,678,584	\$ 660,000	\$ 500,000	\$ 1,500,000	\$ 80,687,439
STP Murfreesboro UZA	\$ 7,988,320	\$ 2,868,000	\$ 5,760,000	\$ 2,720,000	\$ -	\$ 19,336,320
STP Lebanon	\$ 307,700	\$ 916,921	\$ -	\$ 656,000	\$ -	\$ 1,880,621
STP Spring Hill	\$ 1,135,966	\$ -	\$ -	\$ -	\$ -	\$ 1,135,966
STP Fairview	\$ -	\$ -	\$ -	\$ -	\$ -	\$ -
STP Portland	\$ 545,110	\$ -	\$ -	\$ -	\$ -	\$ 545,110
STP White House	\$ 571,212	\$ -	\$ -	\$ -	\$ -	\$ 571,212

Table 4. FYs 2011-2015 MPO Funds: FHWA Unprogrammed Revenues

Grant Program	FY 2011	FY 2012	FY 2013	FY 2014	FY 2015
Remaining Balance*	\$ 11,317,905	\$ 20,656,339	\$ 32,572,336	\$ 48,956,151	\$ 68,042,955
STP Nash-Davidson UZA	\$ 4,683,601	\$ 15,426,802	\$ 30,651,241	\$ 46,613,013	\$ 61,964,814
STP Murfreesboro UZA	\$ 4,625,126	\$ 4,137,280	\$ 828,838	\$ 633,944	\$ 3,234,802
STP Lebanon	\$ 1,246,357	\$ 329,436	\$ 329,436	\$ 20,771	\$ 378,526
STP Spring Hill	\$ 177,780	\$ 177,780	\$ 177,780	\$ 506,217	\$ 844,506
STP Fairview	\$ 486,114	\$ 486,114	\$ 486,114	\$ 607,643	\$ 732,817
STP Portland	\$ 67,527	\$ 67,527	\$ 67,527	\$ 493,310	\$ 651,064
STP White House	\$ 31,400	\$ 31,400	\$ 31,400	\$ 182,053	\$ 337,226

* Annual cumulative balance.

Table 5. FYs 2011-2015 MPO Funds: FHWA Construction Reserves & Balances

Grant Program	FY 2011 to FY 2015
STP Nash-Davidson UZA Unprogrammed Funds	\$ 61,964,814
STP Nash-Davidson UZA Construction Reserve	\$ 61,386,122
STP Nash-Davidson UZA Remaining Balance	\$ 377,092
STP Murfreesboro UZA Unprogrammed Funds	\$ 3,234,802
STP Murfreesboro UZA Construction Reserve	\$ 2,000,000
STP Murfreesboro UZA Remaining Balance	\$ 1,234,802

Table 6. FYs 2011-2015 MPO Funds: FTA Grant Revenues

Grant Program	Opening Balance*	FY 2011 Allocation	FY 2012 Allocation	FY 2013 Allocation	FY 2014 Allocation	FY 2015 Allocation	Total Revenue
Total Revenue	\$ 4,987,386	\$ 16,886,836	\$ 14,868,994	\$ 18,888,335	\$ 19,457,185	\$ 20,040,901	\$ 95,129,637
5307 Nash-Davidson UZA	\$ -	\$ 11,683,802	\$ 12,034,316	\$ 16,000,000	\$ 16,480,000	\$ 16,974,400	\$ 73,172,518
5307 Murfreesboro UZA	\$ 4,000,000	\$ 2,006,160	\$ 2,066,345	\$ 2,128,335	\$ 2,192,185	\$ 2,257,951	\$ 14,650,976
5316 Nash-Davidson UZA	\$ 539,887	\$ 440,113	\$ 455,000	\$ 470,000	\$ 485,000	\$ 499,550	\$ 2,889,550
5317 Nash-Davidson UZA	\$ 378,086	\$ 272,461	\$ 313,333	\$ 290,000	\$ 300,000	\$ 309,000	\$ 1,862,880
5309 Capital Investments	\$ 69,413	\$ 1,304,300	\$ -	\$ -	\$ -	\$ -	\$ 1,373,713
5339 Alternative Analysis	\$ -	\$ 1,180,000	\$ -	\$ -	\$ -	\$ -	\$ 1,180,000

*Opening balance includes unobligated funds from prior years.

Table 7. FYs 2011-2015 MPO Funds: FTA Grant Expenditures

Grant Program	FY 2011	FY 2012	FY 2013	FY 2014	FY 2015	TOTAL
Total Amount Programmed	\$ 20,826,120	\$ 13,683,220	\$ 15,724,643	\$ 16,873,850	\$ 3,450,000	\$ 70,557,833
5307 Nash-Davidson UZA	\$ 11,676,110	\$ 11,393,162	\$ 13,397,265	\$ 14,474,451	\$ 3,450,000	\$ 54,390,988
5307 Murfreesboro UZA	\$ 4,965,750	\$ 1,521,725	\$ 1,567,378	\$ 1,614,399	\$ -	\$ 9,669,252
5316 Nash-Davidson UZA	\$ 980,000	\$ 455,000	\$ 470,000	\$ 485,000	\$ -	\$ 2,390,000
5317 Nash-Davidson UZA	\$ 650,547	\$ 313,333	\$ 290,000	\$ 300,000	\$ -	\$ 1,553,880
5309 Capital Investments	\$ 1,373,713	\$ -	\$ -	\$ -	\$ -	\$ 1,373,713
5339 Alternative Analysis	\$ 1,180,000	\$ -	\$ -	\$ -	\$ -	\$ 1,180,000

Table 8. FYs 2011-2015 MPO Funds: FTA Unprogrammed Revenues

Grant Program	FY 2011	FY 2012	FY 2013	FY 2014	FY 2015
Remaining Balance*	\$ 1,048,102	\$ 2,233,875	\$ 5,397,567	\$ 7,980,902	\$ 24,571,803
5307 Nash-Davidson UZA	\$ 7,692	\$ 648,846	\$ 3,251,581	\$ 5,257,130	\$ 18,781,530
5307 Murfreesboro UZA	\$ 1,040,410	\$ 1,585,030	\$ 2,145,987	\$ 2,723,773	\$ 4,981,723
5316 Nash-Davidson UZA	\$ -	\$ -	\$ -	\$ -	\$ 499,550
5317 Nash-Davidson UZA	\$ -	\$ -	\$ -	\$ -	\$ 309,000
5309 Capital Investments	\$ -	\$ -	\$ -	\$ -	\$ -
5339 Alternative Analysis	\$ -	\$ -	\$ -	\$ -	\$ -

* Annual cumulative balance.