



NASHVILLE AREA

Metropolitan Planning Organization

April 22, 2013

Ms. Rhiannon Chambers
 Transportation Planner 3
 Program Development & Scheduling Office
 Tennessee Department of Transportation
 505 Deaderick Street, Suite 600
 Nashville, Tennessee 37243

Dear Ms. Chambers:

Enclosed please find Administrative Modification #2013-026 to the Nashville Area MPO's FY 2011-2015 Transportation Improvement Program. The following TDOT project is being modified:

TIP #	Project	Modification
2006-411	ITS Various	Change FY for MAINTENANCE from 2014 to 2013

I have included original and revised copies of the affected TIP pages for your reference. The Administrative Modification has been made according to the procedures identified in the MPO's federally-approved Public Participation Plan and result in a fiscally constrained TIP.

Thank you for your assistance in processing this request. If you have any questions or comments, please contact me or Félix Castrodad at 862-7204.

Best,

Michael Skipper
 Executive Director

CC w/enclosures: Mr. Rick Pack, TDOT
 Ms. Angie Midgett, TDOT
 Mr. Jim McAteer, MTA/RTA, MPO TCC Chair
 The Honorable Rogers Anderson, MPO Executive Board Chair

Enclosures



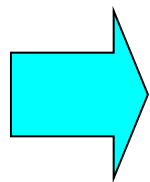
Administrative Modification to The Fiscal Years 2011-2015
Transportation Improvement Program

Administrative Modification #: 2013-026
TIP Number: 2006-411, 2006-411b & 2006-411c

FROM:

TIP# 2006-411, 2006-411b & 2006-411c						
Jurisdiction: TDOT						
Project: ITS-Various						
Termini: Davidson/ Sumner						
Description: Operations & utilities/power/communication, maintenance, construction, etc.						
FY	Work	Funding	Total	Fed	State	Local
2011	UTILITIES	IM	200,000	180,000	20,000	0
2011	OPERATIONS	IM	800,000	720,000	80,000	0
2012	UTILITIES	IM	200,000	180,000	20,000	0
2013	UTILITIES	NHPP	200,000	180,000	20,000	0
2013	CONST	NHPP	1,233,334	1,110,001	123,333	0
2013	OPERATIONS	NHPP	1,233,334	1,110,001	123,333	0
2014	UTILITIES	NHPP	200,000	180,000	20,000	0
2014	OPERATIONS	NHPP	1,125,000	1,012,500	112,500	0
2014	MAINTENANCE	NHPP	3,500,000	3,150,000	350,000	0
TOTAL			8,691,668	7,822,501	869,167	0

TO:



TIP# 2006-411, 2006-411b & 2006-411c						
Jurisdiction: TDOT						
Project: ITS-Various						
Termini: Davidson/ Sumner						
Description: Operations & utilities/power/communication, maintenance, construction, etc.						
FY	Work	Funding	Total	Fed	State	Local
2011	UTILITIES	IM	200,000	180,000	20,000	0
2011	OPERATIONS	IM	800,000	720,000	80,000	0
2012	UTILITIES	IM	200,000	180,000	20,000	0
2013	UTILITIES	NHPP	200,000	180,000	20,000	0
2013	CONST	NHPP	1,233,334	1,110,001	123,333	0
2013	OPERATIONS	NHPP	1,233,334	1,110,001	123,333	0
2013	MAINTENANCE	NHPP	3,500,000	3,150,000	350,000	0
2014	UTILITIES	NHPP	200,000	180,000	20,000	0
2014	OPERATIONS	NHPP	1,125,000	1,012,500	112,500	0
TOTAL			8,691,668	7,822,501	869,167	0

*This project is being modified to change the fiscal year for MAINTENANCE from 2014 to FY 2013. No changes to the funding amounts are taking place and the total project cost remains the same.



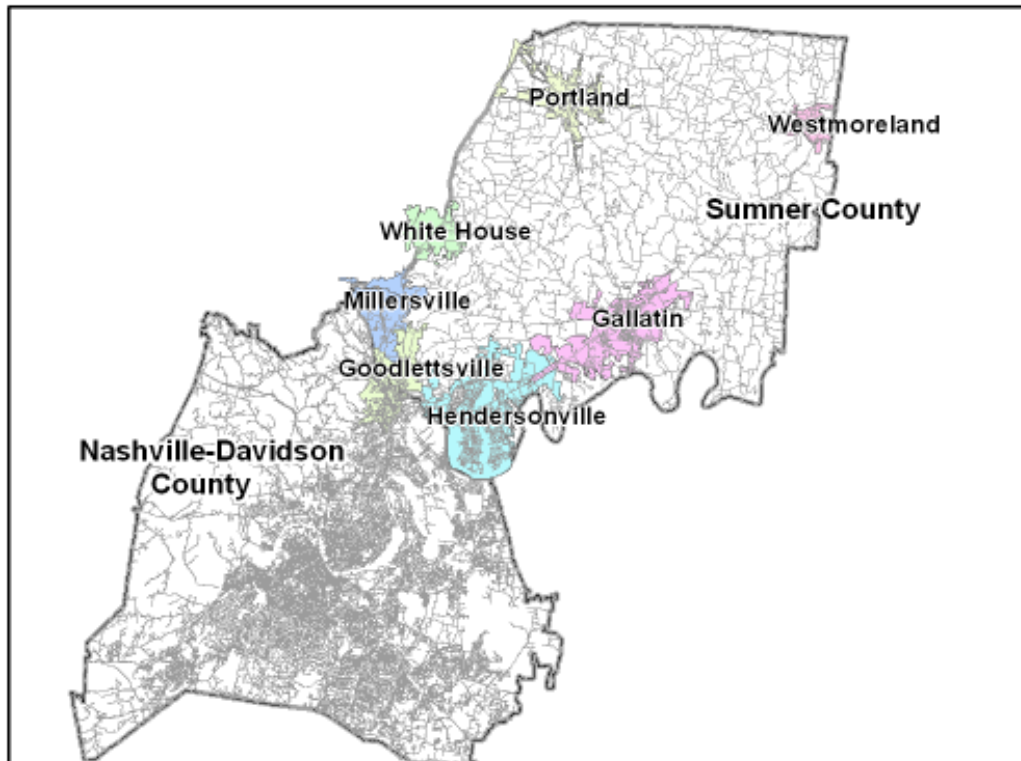
Nashville Area MPO Fiscal Years 2011-2015 Transportation Improvement Program

ORIGINAL

TIP #	<input type="text" value="2006-411"/>	TDOT PIN #	<input type="text"/>	Improvement Type	<input type="text" value="ITS"/>	Lead Agency	<input type="text" value="TDOT"/>
County	<input type="text" value="Davidson/Sumner"/>	Length	<input type="text"/> mi	RTP#	<input type="text" value="1087-281"/>	Conformity Status	<input type="text" value="Exempt"/>
Route/Project Name	<input type="text" value="ITS-Variou s"/>					Total Project Cost	<input type="text" value="\$8,691,668"/>
Termini or Intersection	<input type="text" value="Various ITS"/>						
Project Description	<input type="text" value="Operations & utilities/power/communication, maintenance, construction, etc."/>						

Fiscal Year	Type of Work	Funding Type	Total Funds	Fed Funds	State Funds	Local Funds
<input type="text" value="2011"/>	<input type="text" value="UTILITIES"/>	<input type="text" value="IM"/>	<input type="text" value="\$200,000"/>	<input type="text" value="\$180,000"/>	<input type="text" value="\$20,000"/>	<input type="text" value="\$0"/>
<input type="text" value="2011"/>	<input type="text" value="OPERATIONS"/>	<input type="text" value="IM"/>	<input type="text" value="\$800,000"/>	<input type="text" value="\$720,000"/>	<input type="text" value="\$80,000"/>	<input type="text" value="\$0"/>
<input type="text" value="2012"/>	<input type="text" value="UTILITIES"/>	<input type="text" value="IM"/>	<input type="text" value="\$200,000"/>	<input type="text" value="\$180,000"/>	<input type="text" value="\$20,000"/>	<input type="text" value="\$0"/>
<input type="text" value="2013"/>	<input type="text" value="UTILITIES"/>	<input type="text" value="NHPP"/>	<input type="text" value="\$200,000"/>	<input type="text" value="\$180,000"/>	<input type="text" value="\$20,000"/>	<input type="text" value="\$0"/>

		Remarks
Amendment 1 #	<input type="text"/>	Admin Modification 1# <input type="text" value="2012-035"/>
Amended on	<input type="text"/>	Modified on <input type="text" value="12/6/2012"/>
Amendment 2 #	<input type="text"/>	Admin Modification 2# <input type="text" value="2013-006"/>
Amended on	<input type="text"/>	Modified on <input type="text" value="2/19/2013"/>



This map is for illustrative purposes only. Drawings depict conceptual project corridors and areas, not approved alignments.



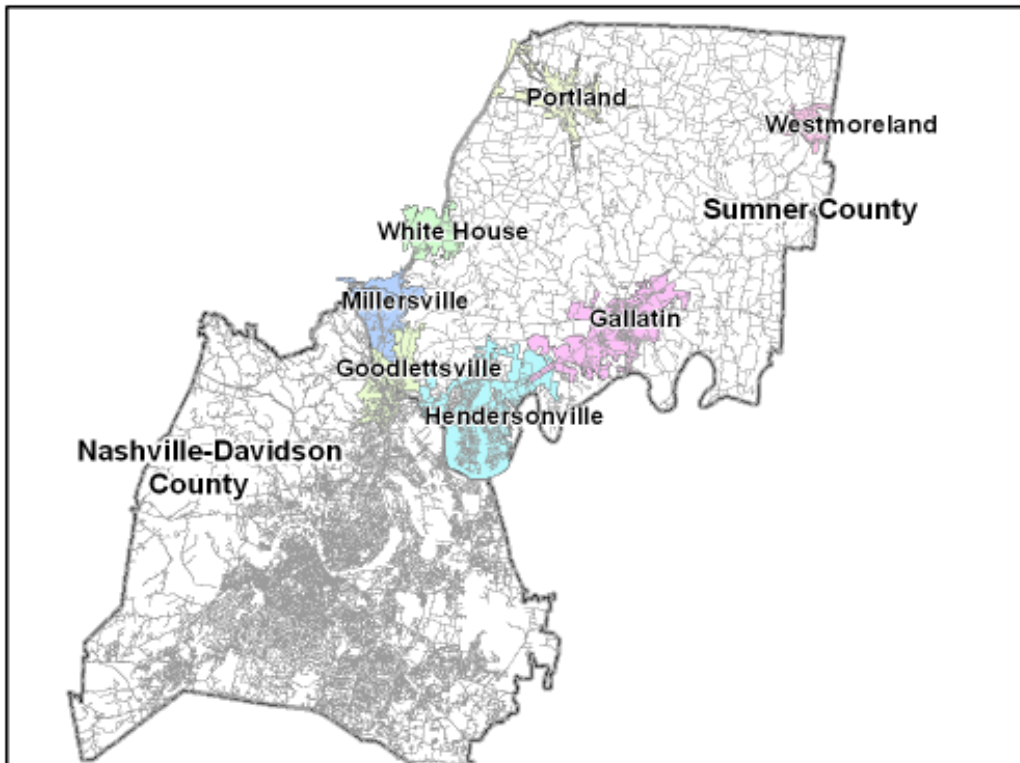
Nashville Area MPO Fiscal Years 2011-2015 Transportation Improvement Program

ORIGINAL

TIP #	<input type="text" value="2006-411b"/>	TDOT PIN #	<input type="text"/>	Improvement Type	<input type="text" value="ITS"/>	Lead Agency	<input type="text" value="TDOT"/>
County	<input type="text" value="Davidson/Sumner"/>	Length	<input type="text"/> mi	RTP#	<input type="text" value="1087-281"/>	Conformity Status	<input type="text" value="Exempt"/>
Route/Project Name	<input type="text" value="ITS-Variou s"/>					Total Project Cost	<input type="text" value="\$8,691,668"/>
Termini or Intersection	<input type="text" value="Various ITS"/>						
Project Description	<input type="text" value="Operations & utilities/power/communication, maintenance, construction, etc."/>						

Fiscal Year	Type of Work	Funding Type	Total Funds	Fed Funds	State Funds	Local Funds
<input type="text" value="2013"/>	<input type="text" value="CONST"/>	<input type="text" value="NHPP"/>	<input type="text" value="\$1,233,334"/>	<input type="text" value="\$1,110,001"/>	<input type="text" value="\$123,333"/>	<input type="text" value="\$0"/>
<input type="text" value="2013"/>	<input type="text" value="OPERATIONS"/>	<input type="text" value="NHPP"/>	<input type="text" value="\$1,233,334"/>	<input type="text" value="\$1,110,001"/>	<input type="text" value="\$123,333"/>	<input type="text" value="\$0"/>
<input type="text" value="2014"/>	<input type="text" value="UTILITIES"/>	<input type="text" value="NHPP"/>	<input type="text" value="\$200,000"/>	<input type="text" value="\$180,000"/>	<input type="text" value="\$20,000"/>	<input type="text" value="\$0"/>
<input type="text" value="2014"/>	<input type="text" value="OPERATIONS"/>	<input type="text" value="NHPP"/>	<input type="text" value="\$1,125,000"/>	<input type="text" value="\$1,012,500"/>	<input type="text" value="\$112,500"/>	<input type="text" value="\$0"/>

		Remarks	This is a continuation of project 2006-411. Due to database design, project was divided in three.	
Amendment 1 #	<input type="text"/>	Admin Modification 1#		<input type="text" value="2012-035"/>
Amended on	<input type="text"/>	Modified on		<input type="text" value="12/6/2012"/>
Amendment 2 #	<input type="text"/>	Admin Modification 2#		<input type="text" value="2013-006"/>
Amended on	<input type="text"/>	Modified on		<input type="text" value="2/19/2013"/>



This map is for illustrative purposes only. Drawings depict conceptual project corridors and areas, not approved alignments.



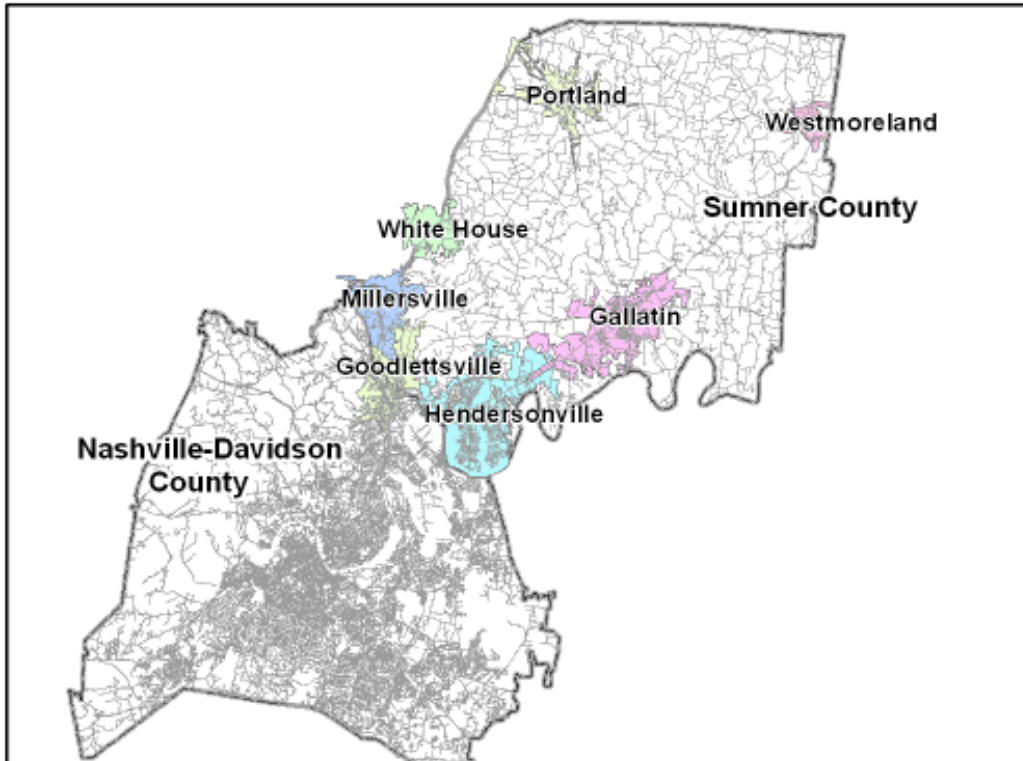
Nashville Area MPO Fiscal Years 2011-2015 Transportation Improvement Program

ORIGINAL

TIP #	<input type="text" value="2006-411c"/>	TDOT PIN #	<input type="text"/>	Improvement Type	<input type="text" value="ITS"/>	Lead Agency	<input type="text" value="TDOT"/>
County	<input type="text" value="Davidson/Sumner"/>	Length	<input type="text"/> mi	RTP#	<input type="text" value="1087-281"/>	Conformity Status	<input type="text" value="Exempt"/>
Route/Project Name	<input type="text" value="ITS-Variou s"/>					Total Project Cost	<input type="text" value="\$8,691,668"/>
Termini or Intersection	<input type="text" value="Various ITS"/>						
Project Description	<input type="text" value="Operations & utilities/power/communication, maintenance, construction, etc."/>						

Fiscal Year	Type of Work	Funding Type	Total Funds	Fed Funds	State Funds	Local Funds
<input type="text" value="2014"/>	<input type="text" value="MAINTENANCE"/>	<input type="text" value="NHPP"/>	<input type="text" value="\$3,500,000"/>	<input type="text" value="\$3,150,000"/>	<input type="text" value="\$350,000"/>	<input type="text" value="\$0"/>
<input type="text"/>	<input type="text"/>	<input type="text"/>	<input type="text"/>	<input type="text"/>	<input type="text"/>	<input type="text"/>
<input type="text"/>	<input type="text"/>	<input type="text"/>	<input type="text"/>	<input type="text"/>	<input type="text"/>	<input type="text"/>
<input type="text"/>	<input type="text"/>	<input type="text"/>	<input type="text"/>	<input type="text"/>	<input type="text"/>	<input type="text"/>

		Remarks	This is a continuation of project 2006-411. Due to database design, project was divided in three.	
Amendment 1 #	<input type="text"/>	Admin Modification 1#		<input type="text" value="2012-035"/>
Amended on	<input type="text"/>	Modified on		<input type="text" value="12/6/2012"/>
Amendment 2 #	<input type="text"/>	Admin Modification 2#		<input type="text" value="2013-006"/>
Amended on	<input type="text"/>	Modified on		<input type="text" value="2/19/2013"/>



This map is for illustrative purposes only. Drawings depict conceptual project corridors and areas, not approved alignments.

This page intentionally left blank



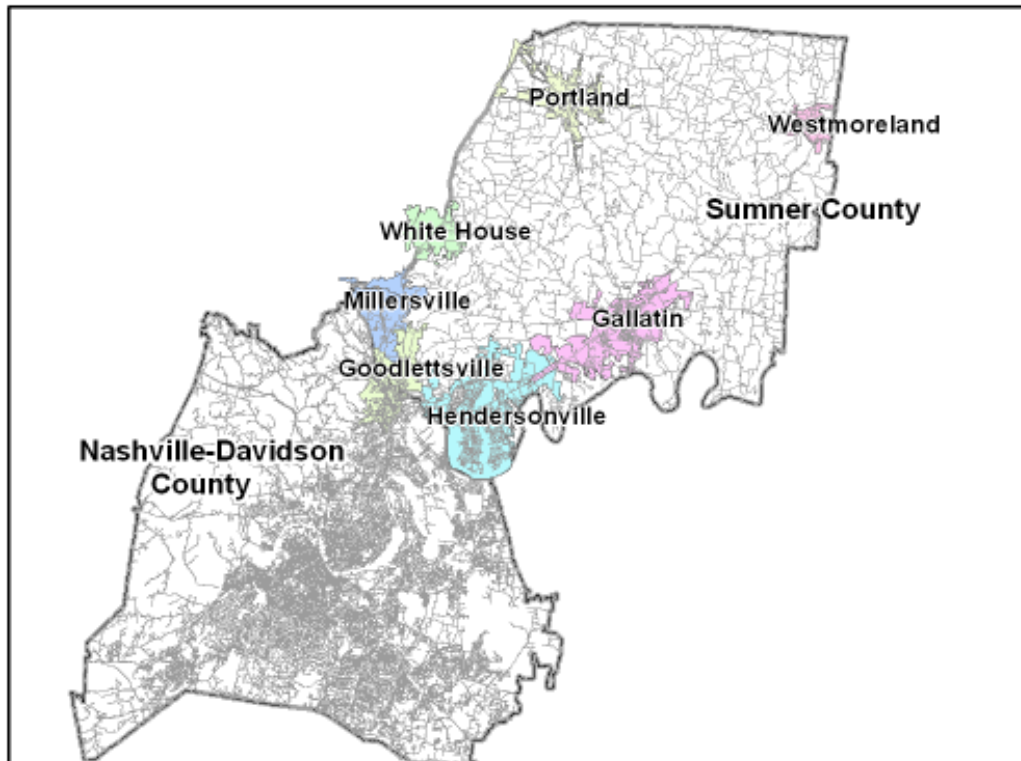
Nashville Area MPO Fiscal Years 2011-2015 Transportation Improvement Program

REVISED

TIP #	<input type="text" value="2006-411"/>	TDOT PIN #	<input type="text"/>	Improvement Type	<input type="text" value="ITS"/>	Lead Agency	<input type="text" value="TDOT"/>
County	<input type="text" value="Davidson/Sumner"/>	Length	<input type="text"/> mi	RTP#	<input type="text" value="1087-281"/>	Conformity Status	<input type="text" value="Exempt"/>
Route/Project Name	<input type="text" value="ITS-Variou s"/>					Total Project Cost	<input type="text" value="\$8,691,668"/>
Termini or Intersection	<input type="text" value="Various ITS"/>						
Project Description	<input type="text" value="Operations & utilities/power/communication, maintenance, construction, etc."/>						

Fiscal Year	Type of Work	Funding Type	Total Funds	Fed Funds	State Funds	Local Funds
<input type="text" value="2011"/>	<input type="text" value="UTILITIES"/>	<input type="text" value="IM"/>	<input type="text" value="\$200,000"/>	<input type="text" value="\$180,000"/>	<input type="text" value="\$20,000"/>	<input type="text" value="\$0"/>
<input type="text" value="2011"/>	<input type="text" value="OPERATIONS"/>	<input type="text" value="IM"/>	<input type="text" value="\$800,000"/>	<input type="text" value="\$720,000"/>	<input type="text" value="\$80,000"/>	<input type="text" value="\$0"/>
<input type="text" value="2012"/>	<input type="text" value="UTILITIES"/>	<input type="text" value="IM"/>	<input type="text" value="\$200,000"/>	<input type="text" value="\$180,000"/>	<input type="text" value="\$20,000"/>	<input type="text" value="\$0"/>
<input type="text" value="2013"/>	<input type="text" value="UTILITIES"/>	<input type="text" value="NHPP"/>	<input type="text" value="\$200,000"/>	<input type="text" value="\$180,000"/>	<input type="text" value="\$20,000"/>	<input type="text" value="\$0"/>

		Remarks
Amendment 1 #	<input type="text"/>	Admin Modification 1# <input type="text" value="2013-006"/>
Amended on	<input type="text"/>	Modified on <input type="text" value="2/19/2013"/>
Amendment 2 #	<input type="text"/>	Admin Modification 2# <input type="text" value="2013-026"/>
Amended on	<input type="text"/>	Modified on <input type="text" value="4/22/2013"/>



This map is for illustrative purposes only. Drawings depict conceptual project corridors and areas, not approved alignments.



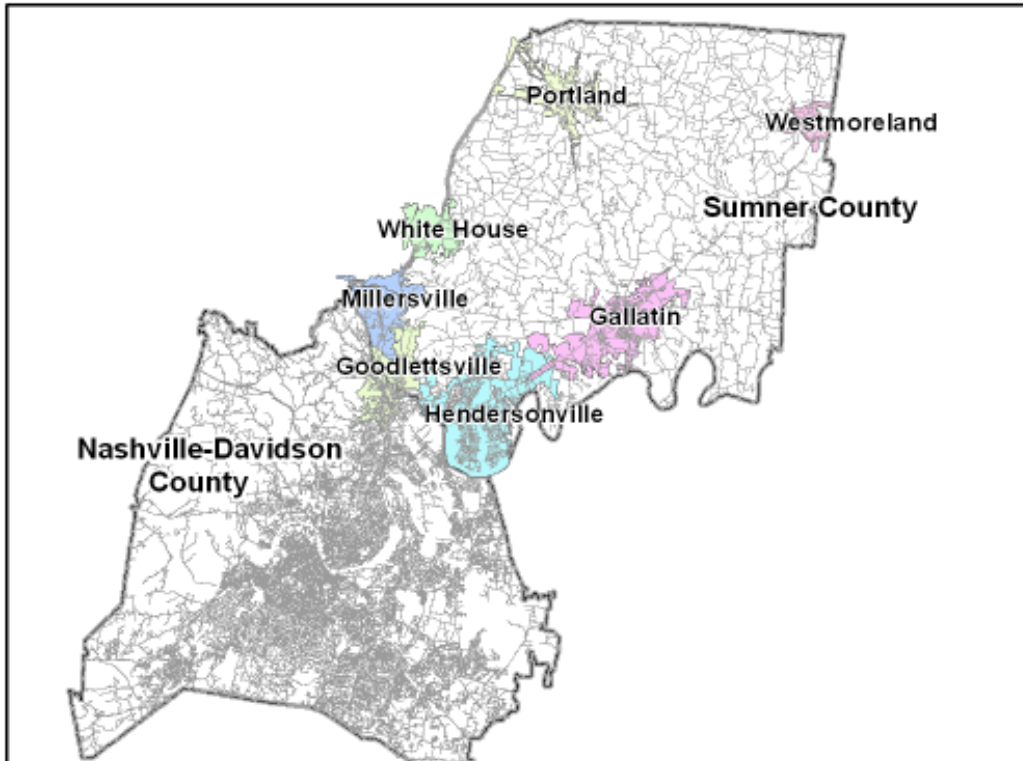
Nashville Area MPO Fiscal Years 2011-2015 Transportation Improvement Program

REVISED

TIP #	<input type="text" value="2006-411b"/>	TDOT PIN #	<input type="text"/>	Improvement Type	<input type="text" value="ITS"/>	Lead Agency	<input type="text" value="TDOT"/>
County	<input type="text" value="Davidson/Sumner"/>	Length	<input type="text"/> mi	RTP#	<input type="text" value="1087-281"/>	Conformity Status	<input type="text" value="Exempt"/>
Route/Project Name	<input type="text" value="ITS-Variou s"/>					Total Project Cost	<input type="text" value="\$8,691,668"/>
Termini or Intersection	<input type="text" value="Various ITS"/>						
Project Description	<input type="text" value="Operations & utilities/power/communication, maintenance, construction, etc."/>						

Fiscal Year	Type of Work	Funding Type	Total Funds	Fed Funds	State Funds	Local Funds
<input type="text" value="2013"/>	<input type="text" value="CONST"/>	<input type="text" value="NHPP"/>	<input type="text" value="\$1,233,334"/>	<input type="text" value="\$1,110,001"/>	<input type="text" value="\$123,333"/>	<input type="text" value="\$0"/>
<input type="text" value="2013"/>	<input type="text" value="OPERATIONS"/>	<input type="text" value="NHPP"/>	<input type="text" value="\$1,233,334"/>	<input type="text" value="\$1,110,001"/>	<input type="text" value="\$123,333"/>	<input type="text" value="\$0"/>
<input type="text" value="2013"/>	<input type="text" value="MAINTENANCE"/>	<input type="text" value="NHPP"/>	<input type="text" value="\$3,500,000"/>	<input type="text" value="\$3,150,000"/>	<input type="text" value="\$350,000"/>	<input type="text" value="\$0"/>
<input type="text" value="2014"/>	<input type="text" value="UTILITIES"/>	<input type="text" value="NHPP"/>	<input type="text" value="\$200,000"/>	<input type="text" value="\$180,000"/>	<input type="text" value="\$20,000"/>	<input type="text" value="\$0"/>

			Remarks	This is a continuation of project 2006-411. Due to database design, project was divided in three.
Amendment 1 #	<input type="text"/>	Admin Modification 1#	<input type="text" value="2013-006"/>	
Amended on	<input type="text"/>	Modified on	<input type="text" value="2/19/2013"/>	
Amendment 2 #	<input type="text"/>	Admin Modification 2#	<input type="text" value="2013-026"/>	
Amended on	<input type="text"/>	Modified on	<input type="text" value="4/22/2013"/>	



This map is for illustrative purposes only. Drawings depict conceptual project corridors and areas, not approved alignments.



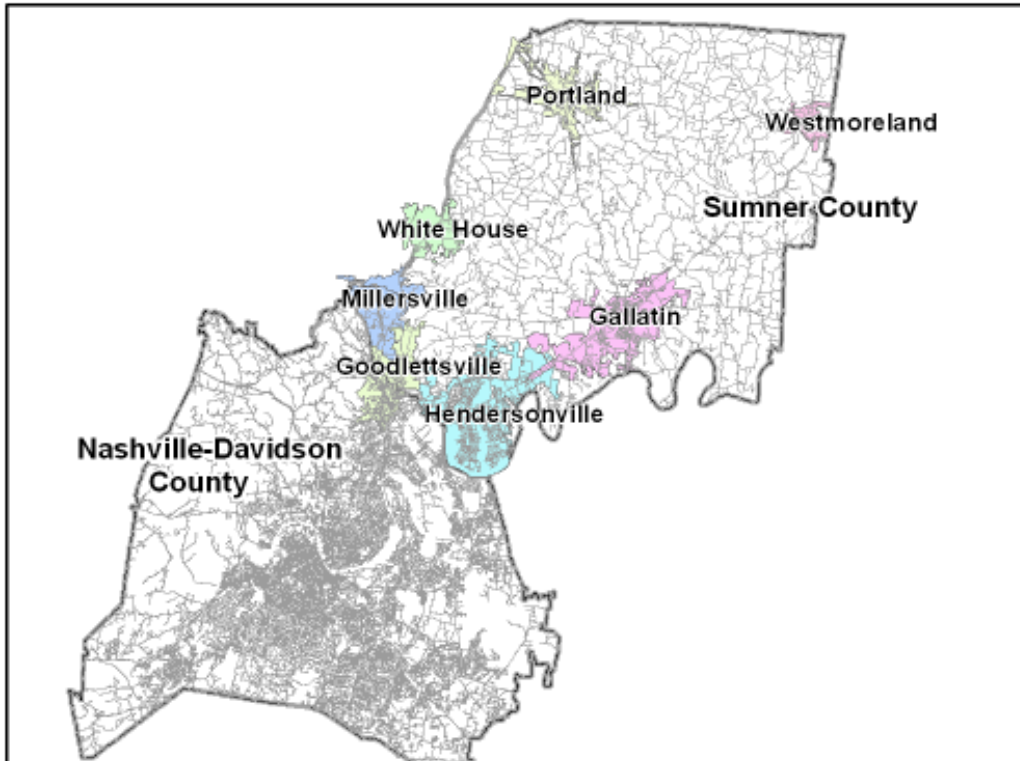
Nashville Area MPO Fiscal Years 2011-2015 Transportation Improvement Program

REVISED

TIP #	<input type="text" value="2006-411c"/>	TDOT PIN #	<input type="text"/>	Improvement Type	<input type="text" value="ITS"/>	Lead Agency	<input type="text" value="TDOT"/>
County	<input type="text" value="Davidson/Sumner"/>	Length	<input type="text"/> mi	RTP#	<input type="text" value="1087-281"/>	Conformity Status	<input type="text" value="Exempt"/>
Route/Project Name	<input type="text" value="ITS-Variou s"/>					Total Project Cost	<input type="text" value="\$8,691,668"/>
Termini or Intersection	<input type="text" value="Various ITS"/>						
Project Description	<input type="text" value="Operations & utilities/power/communication, maintenance, construction, etc."/>						

Fiscal Year	Type of Work	Funding Type	Total Funds	Fed Funds	State Funds	Local Funds
<input type="text" value="2014"/>	<input type="text" value="OPERATIONS"/>	<input type="text" value="NHPP"/>	<input type="text" value="\$1,125,000"/>	<input type="text" value="\$1,012,500"/>	<input type="text" value="\$112,500"/>	<input type="text" value="\$0"/>
<input type="text"/>	<input type="text"/>	<input type="text"/>	<input type="text"/>	<input type="text"/>	<input type="text"/>	<input type="text"/>
<input type="text"/>	<input type="text"/>	<input type="text"/>	<input type="text"/>	<input type="text"/>	<input type="text"/>	<input type="text"/>
<input type="text"/>	<input type="text"/>	<input type="text"/>	<input type="text"/>	<input type="text"/>	<input type="text"/>	<input type="text"/>

	Remarks	
Amendment 1 # <input type="text"/>	Admin Modification 1# <input type="text" value="2013-006"/>	This is a continuation of project 2006-411. Due to database design, project was divided in three.
Amended on <input type="text"/>	Modified on <input type="text" value="2/19/2013"/>	
Amendment 2 # <input type="text"/>	Admin Modification 2# <input type="text" value="2013-026"/>	
Amended on <input type="text"/>	Modified on <input type="text" value="4/22/2013"/>	



This map is for illustrative purposes only. Drawings depict conceptual project corridors and areas, not approved alignments.

This page intentionally left blank

**Nashville Area MPO
Transportation Improvement Program
FYs 2011 through 2015**

Funding Tables, Before April 22, 2013 Administrative Modification

Table 3. FYs 2011-2015 TDOT Program Funds

Grant Program	FY 2011	FY 2012	FY 2013	FY 2014	FY 2015	TOTAL
Total Amount Programmed*	\$ 317,510,334	\$ 234,615,948	\$ 174,161,558	\$ 33,619,844	\$ 431,250	\$ 760,338,934
BRR-L (Bridge Replacement & Rehabilitation - Local)	\$ 408,000	\$ 2,808,000	\$ -	\$ -	\$ -	\$ 3,216,000
BRR-S (Bridge Replacement & Rehabilitation - State)	\$ 23,467,099	\$ 3,240,000	\$ -	\$ -	\$ -	\$ 26,707,099
CMAQ (Congestion Mitigation Air Quality)	\$ 10,205,043	\$ 8,991,445	\$ 6,387,300	\$ 3,043,600	\$ -	\$ 28,627,388
DEMO (Section 115 Demonstration Program)	\$ 354,172	\$ -	\$ 72,689	\$ -	\$ -	\$ 426,861
ENH (Enhancement Grants)	\$ 2,994,728	\$ 5,438,353	\$ 660,490	\$ 3,023,150	\$ -	\$ 12,116,721
HPP (High Priority Projects)	\$ 14,620,467	\$ 7,575,996	\$ 6,916,350	\$ 844,800	\$ -	\$ 29,957,613
HSIP (Highway Safety Improvement Program)	\$ 7,740,000	\$ 4,500,000	\$ 1,800,000	\$ 1,800,000	\$ -	\$ 15,840,000
H-STP (STP Set Aside for Hazard Elimination)	\$ -	\$ 100,000	\$ -	\$ -	\$ -	\$ 100,000
IM (Interstate Maintenance)	\$ 113,665,050	\$ 53,859,161	\$ 60,000	\$ -	\$ -	\$ 167,548,211
IMD (Interstate Maintenance Discretionary)	\$ -	\$ 3,750,000	\$ -	\$ -	\$ -	\$ 3,750,000
ITS (Intelligent Transportation Systems)	\$ 1,891,073	\$ -	\$ -	\$ -	\$ -	\$ 1,891,073
NHS (National Highway System)	\$ 1,760,000	\$ 17,276,800	\$ 1,600,000	\$ 112,500	\$ -	\$ 20,749,300
NHPP (National Highway Performance Program)	\$ -	\$ -	\$ 93,869,314	\$ 12,863,480	\$ -	\$ 106,732,794
NSBP (National Scenic Byways Program)	\$ 276,644	\$ 266,698	\$ -	\$ -	\$ -	\$ 543,342
PLHD (Public Lands Highways)	\$ 4,023,107	\$ -	\$ -	\$ -	\$ -	\$ 4,023,107
SIP (Safety Improvement Program)	\$ -	\$ 134,640	\$ -	\$ -	\$ -	\$ 134,640
SRTS (Safe Routes to School)	\$ 850,000	\$ 850,000	\$ 850,000	\$ 850,000	\$ -	\$ 3,400,000
STP (State Surface Transportation Program)	\$ 55,721,742	\$ 57,029,216	\$ 18,640,000	\$ 4,520,000	\$ -	\$ 135,910,958
STP-S (STP Set Aside for Safety Improvements)	\$ -	\$ -	\$ 266,400	\$ -	\$ -	\$ 266,400
State Funds (includes matching funds)	\$ 79,533,209	\$ 68,795,639	\$ 43,039,015	\$ 6,562,314	\$ 431,250	\$ 198,361,427

*Funds are programmed only if corresponding revenue is anticipated by TDOT.

This page intentionally left blank

REVISED

**Nashville Area MPO
Transportation Improvement Program
FYs 2011 through 2015**

Funding Tables, After April 22, 2013 Administrative Modification

Table 3. FYs 2011-2015 TDOT Program Funds

Grant Program	FY 2011	FY 2012	FY 2013	FY 2014	FY 2015	TOTAL
Total Amount Programmed*	\$ 317,510,334	\$ 234,615,948	\$ 177,661,558	\$ 30,119,844	\$ 431,250	\$ 760,338,934
BRR-L (Bridge Replacement & Rehabilitation - Local)	\$ 408,000	\$ 2,808,000	\$ -	\$ -	\$ -	\$ 3,216,000
BRR-S (Bridge Replacement & Rehabilitation - State)	\$ 23,467,099	\$ 3,240,000	\$ -	\$ -	\$ -	\$ 26,707,099
CMAQ (Congestion Mitigation Air Quality)	\$ 10,205,043	\$ 8,991,445	\$ 6,387,300	\$ 3,043,600	\$ -	\$ 28,627,388
DEMO (Section 115 Demonstration Program)	\$ 354,172	\$ -	\$ 72,689	\$ -	\$ -	\$ 426,861
ENH (Enhancement Grants)	\$ 2,994,728	\$ 5,438,353	\$ 660,490	\$ 3,023,150	\$ -	\$ 12,116,721
HPP (High Priority Projects)	\$ 14,620,467	\$ 7,575,996	\$ 6,916,350	\$ 844,800	\$ -	\$ 29,957,613
HSIP (Highway Safety Improvement Program)	\$ 7,740,000	\$ 4,500,000	\$ 1,800,000	\$ 1,800,000	\$ -	\$ 15,840,000
H-STP (STP Set Aside for Hazard Elimination)	\$ -	\$ 100,000	\$ -	\$ -	\$ -	\$ 100,000
IM (Interstate Maintenance)	\$ 113,665,050	\$ 53,859,161	\$ 60,000	\$ -	\$ -	\$ 167,548,211
IMD (Interstate Maintenance Discretionary)	\$ -	\$ 3,750,000	\$ -	\$ -	\$ -	\$ 3,750,000
ITS (Intelligent Transportation Systems)	\$ 1,891,073	\$ -	\$ -	\$ -	\$ -	\$ 1,891,073
NHS (National Highway System)	\$ 1,760,000	\$ 17,276,800	\$ 1,600,000	\$ 112,500	\$ -	\$ 20,749,300
NHPP (National Highway Performance Program)	\$ -	\$ -	\$ 97,019,314	\$ 9,713,480	\$ -	\$ 106,732,794
NSBP (National Scenic Byways Program)	\$ 276,644	\$ 266,698	\$ -	\$ -	\$ -	\$ 543,342
PLHD (Public Lands Highways)	\$ 4,023,107	\$ -	\$ -	\$ -	\$ -	\$ 4,023,107
SIP (Safety Improvement Program)	\$ -	\$ 134,640	\$ -	\$ -	\$ -	\$ 134,640
SRTS (Safe Routes to School)	\$ 850,000	\$ 850,000	\$ 850,000	\$ 850,000	\$ -	\$ 3,400,000
STP (State Surface Transportation Program)	\$ 55,721,742	\$ 57,029,216	\$ 18,640,000	\$ 4,520,000	\$ -	\$ 135,910,958
STP-S (STP Set Aside for Safety Improvements)	\$ -	\$ -	\$ 266,400	\$ -	\$ -	\$ 266,400
State Funds (includes matching funds)	\$ 79,533,209	\$ 68,795,639	\$ 43,389,015	\$ 6,212,314	\$ 431,250	\$ 198,361,427

*Funds are programmed only if corresponding revenue is anticipated by TDOT.